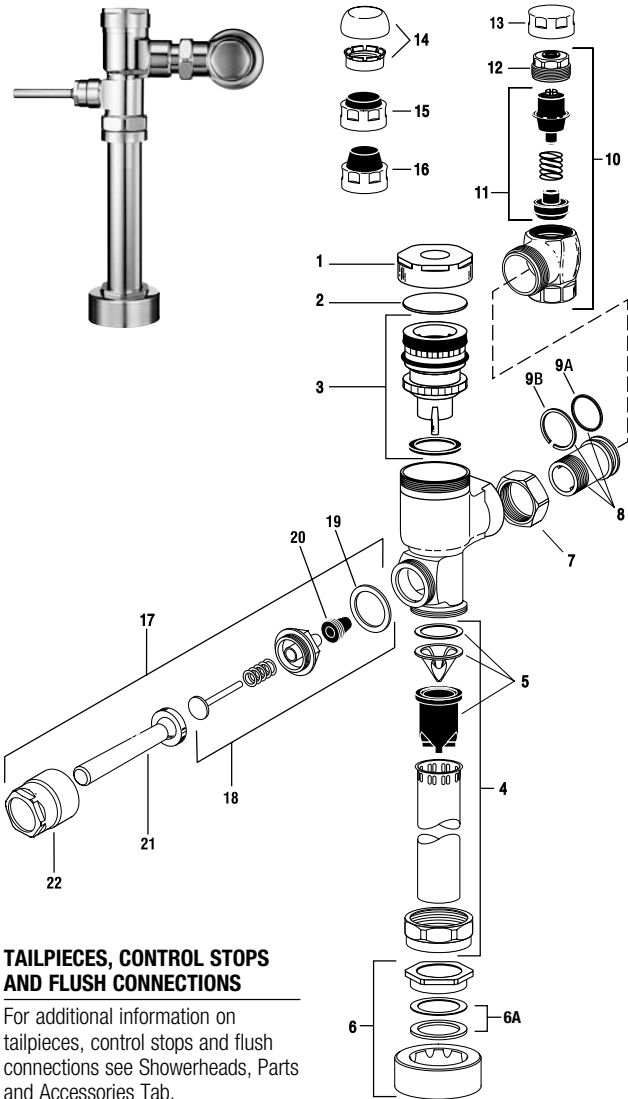


Gem•2® Flushometer



**TAILPIECES, CONTROL STOPS AND FLUSH CONNECTIONS**

For additional information on tailpieces, control stops and flush connections see Showerheads, Parts and Accessories Tab.

| ITEM 6A. SLIP JOINT GASKETS AND RINGS |                 |                                |
|---------------------------------------|-----------------|--------------------------------|
| Size                                  | Part No.        | Description                    |
| 1-1/2"                                | <b>43240</b>    | Red Friction Ring              |
|                                       | <b>43236</b>    | Black Slip Joint Gasket        |
|                                       | <b>43245</b>    | Flexible Seat                  |
|                                       | <b>99190320</b> | Rigid Seat (rubber over brass) |
| 1-1/2" x 1-1/4"                       | <b>88093608</b> | Slip Joint Gasket – Rigid      |
| 1-1/4"                                | <b>43239</b>    | Red Friction Ring              |
|                                       | <b>43235</b>    | Black Slip Joint Gasket        |
|                                       | <b>47731</b>    | Rigid Seat (rubber over brass) |
| 1"                                    | <b>43240</b>    | Red Friction Ring              |
|                                       | <b>99010617</b> | Black Slip Joint Gasket        |
| 3/4"                                  | <b>43247</b>    | Red Friction Ring              |
|                                       | <b>43233</b>    | Black Slip Joint Gasket        |

| PARTS LIST   |  |   |
|--|--|---|
| Item No.   | Part No.   | Description   |
| 1.   | <b>99050074</b>  | CP Cover  |
| 2.   | <b>99101787</b>  | Slip Disc   |
| 3.   | <b>99525743</b>  | Piston Kit – 1.28 gpf/4.8 Lpf Water Closet          |
|  | <b>46701</b>   | Piston Kit – 3.5 gpf/13.2 Lpf Water Closet          |
|  | <b>46702</b>   | 1.6 gpf/6 Lpf Water Closet                          |
|  | <b>99101788</b>  | Piston Kit – 1.5 gpf/5.7 Lpf Urinal                 |
|  | <b>99080282</b>  | Piston Kit – 1.0 gpf/3.8 Lpf Urinal                 |
|  | <b>88095508</b>  | Piston Kit – 0.5 gpf/1.9 Lpf Urinal                 |
|  |  | Piston Kit – 2.4 gpf/9.0 Lpf Water Closet           |
| PISTON KITS FOR OLD STYLE ADJUSTABLE GEM FLUSHOMETERS  |  |   |
|  | <b>47708</b>   | Piston Kit – Water Closet                           |
|  | <b>47707</b>   | Piston Kit – Urinal                                 |
| ALL PISTON KITS INCLUDE G-21 MAIN SEAT (See next page) |  |   |
| 4.   | <b>48806</b>   | 3/4" x 9" Vacuum Breaker                            |
|  | <b>48808</b>   | 1-1/4" x 9" Vacuum Breaker                          |
|  | <b>48811</b>   | 1-1/2" x 9" Vacuum Breaker                          |
| 5.   | <b>48805</b>   | Vacuum Breaker Repair Kit                           |
| 6.   | <b>99288789</b>  | (38 mm) Spud Coupling                               |
|  | <b>88095923</b>  | 1-1/4" (32 mm) Spud Coupling                        |
|  | <b>99288788</b>  | 3/4" (19 mm) Spud Coupling                          |
| 6A.  | <b>SEE SLIP JOINT GASKETS AND RINGS TABLE BELOW LEFT</b> |   |
| 7.   | <b>43258</b>   | Stop Coupling                                       |
| 8.   | <b>43261</b>   | Adjustable Tailpiece 2-1/16" (Standard Length)      |
| 9A.  | <b>99283851</b>  | O-ring – 24 per package                             |
| 9B.  | <b>43259</b>   | Locking ring – 12 per package                       |
| 10   | <b>99061574</b>  | 1" Screwdriver Bak-Chek® Stop CP – complete         |
|  | <b>99101907</b>  | 3/4" Screwdriver Bak-Chek® Stop CP – complete       |
| 11.  | <b>48817</b>   | Control Stop Repair Kit*                            |
|  | <b>48818</b>   | Control Stop Repair Kit**                           |
| 12.  | <b>99101672</b>  | CP Bonnet*  |
|  | <b>OBSOLETE</b>  | CP Bonnet** – <b>OBSOLETE</b>                       |
| 13.  | <b>48855</b>   | Control Stop Cap CP*                                |
|  |  | Control Stop Cap CP**                               |
| 14.  | <b>OBSOLETE</b>  | Vandal Resistant Control Stop Cap Assembly*         |
|  |  | Vandal Resistant Control Stop Cap Assembly**        |
| 15.  | <b>47712</b>   | Control Stop Cap w/Bumper (-YO Variation)*          |
| 16.  | <b>99101676</b>  | Control Stop Cap w/Extended Bumper (-YG Variation)* |
| HANDLE REPAIR KIT                                      |  |   |
| 17.  | <b>46602</b>   | Handle Assembly                                     |
| 18.  | <b>46601</b>   | Handle Repair Kit – 6 per package                   |
| 19.  | <b>46613</b>   | Handle Gasket – 48 per package                      |
| 20.  | <b>46607</b>   | Handle Seal – 12 per package                        |
| 21.  | <b>99777742</b>  | Handle Grip   |
| 22.  | <b>88092899</b>  | Handle Socket                                       |
| 23.  | <b>48855</b>   | Control Stop Plug CP* Standard on XL                |

\*For use with 1" and 3/4" H-700-A and 1" H-600-A Bak-Chek® screwdriver control stop  
\*\*For use with 3/4" H-600-A Bak-Chek® screwdriver control stop

Gem•2® Flushometer

TROUBLESHOOTING GUIDE

**IMPORTANT:** The GEM flushometer is engineered for quiet operation. Excessive water flow creates noise, while too little water flow may not satisfy the needs of the fixture. Proper adjustment is made when plumbing fixture is cleansed after each flush without splashing water out from the lip AND a quiet flushing cycle is achieved.

Never open Control Stop to where the flow from the valve exceeds the flow capability of the fixture. In the event of a valve failure, the fixture must be able to accommodate a continuous flow from the valve.

**ATTENTION INSTALLERS:** With the exception of the control stop inlet, **DO NOT USE** pipe sealant or plumbing grease on any valve component or coupling! To protect the chrome or special finish of Sloan flushometers, **DO NOT USE** toothed tools to install or service these valves. Use our A-50 Super Wrench or other smooth-jawed wrench to secure couplings. Regulations for low consumption fixtures (1.6 gpf/6.0 Lpf closets and 1.0 gpf/3.8 Lpf urinals) prohibit use of higher flush volumes.

1. Valve DOES NOT function.

A. Control stop or main valve is closed. Open control stop or main valve.

B. Handle assembly is worn. Install handle repair kit G-50-A or replace handle.
- C. Relief valve is worn and sticking in UP position. Replace piston.

2. Insufficient volume of water to adequately siphon fixture.

A. Control stop not open enough. Adjust control stop for desired delivery of water.

B. Urinal piston parts inside a closet valve. Replace piston parts with proper closet piston.3. Length of flush too short (short flushing) or valve closes off immediately.

A. Piston assembly is not hand-tight. Screw the assembly hand-tight.

B. Enlarged bypass orifice from corrosion or damage. Install NEW inside parts kit to correct problem and update flushometer.

4. Length of flush too long (long flushing) or fails to close off.

A. Piston is not seating properly or bypass orifice is clogged because of foreign material, or bypass orifice is clogged by an invisible gelatinous film from "over-treated" water. Disassemble the working parts and wash thoroughly. **NOTE:** Size of the orifice in the bypass is of utmost importance for the proper metering of water into the upper chamber of the valve. **DO NOT** enlarge or damage this orifice. Replace piston if cleaning does not correct problem.

B. Line pressure has dropped and is not sufficient to force relief valve to seat. Shut off all control stops until pressure has been restored, then open them again.
- C. 3.5 gpf closet piston has been used in a 1.0 or 1.5 gpf urinal or on a 1.6 gpf toilet. Replace with proper piston.

5. Leaking at handle assembly.

A. The B-39 seal may have deteriorated. Install new B-39 seal. **NOTE:** The seal will easily slide right onto the bushing if it is wet.

B. Handle gasket has been omitted. Install G-35 handle gasket or Sloan handle repair kit G-50-A.

CARE AND CLEANING

**DO NOT USE** abrasive or chemical cleaners to clean flushometers as they may dull the luster and attack the chrome or special decorative finishes. Use **ONLY** mild soap and water, then wipe dry with clean cloth or towel.

While cleaning the bathroom tile, the flushometer should be protected from any splattering of cleaner. Acids and cleaning fluids can discolor or remove chrome plating.

When assistance is required, please contact  
Sloan Technical Support at: 1-888-SLOAN-14 (1-888-756-2614).

